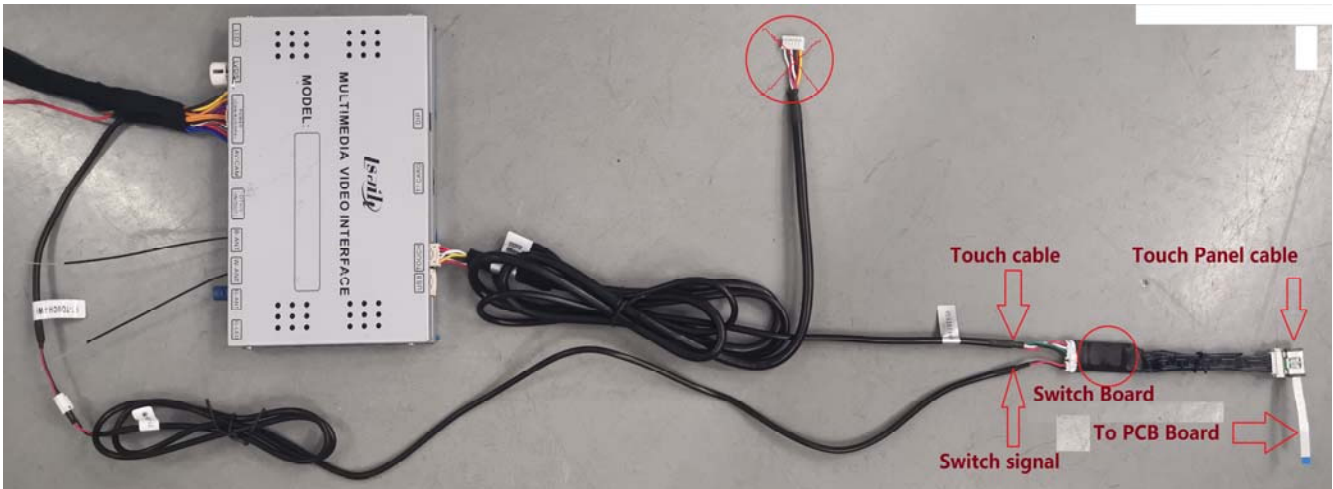


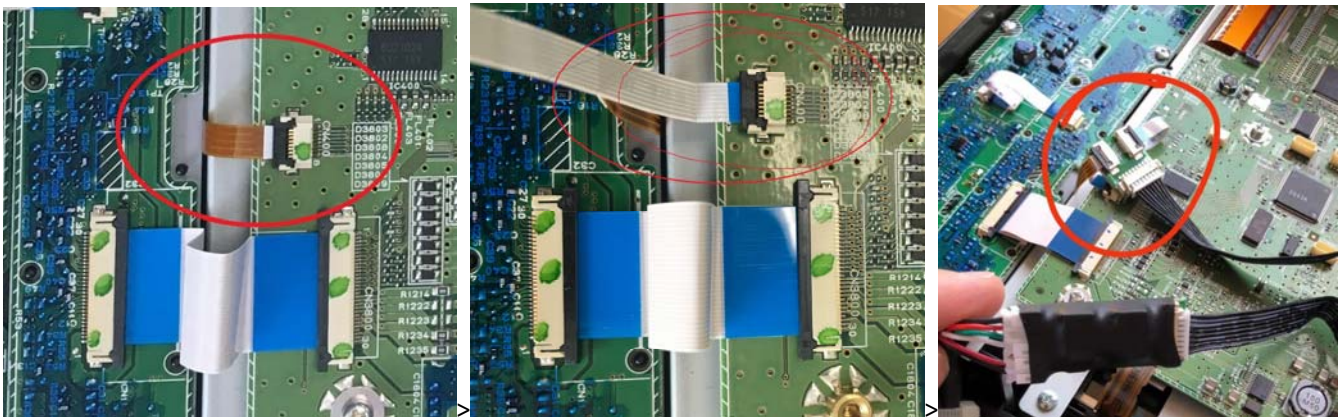
原装电阻式触摸面板，触摸面板开关安装方法

Original resistive touch panel, Touch Panel Switch installation method

1, 安装触摸面板开关, Install the touch panel switch.



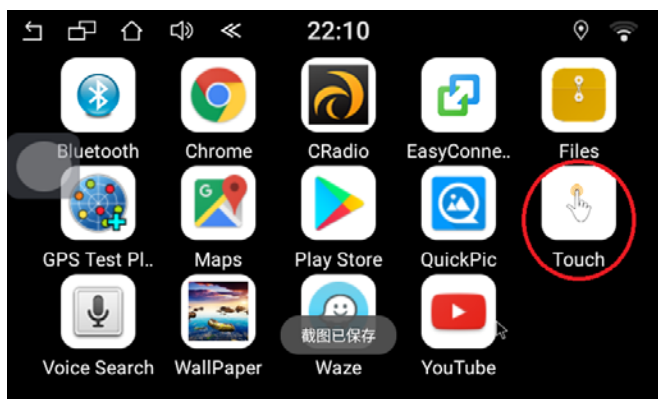
触摸开关连接图 Touch switch connection diagram



原装电阻式触摸屏连接器，加装触摸面板开关 Original Resistive Touch Panel Connector, Add Touch Panel Switch

2, 启动安卓盒子, 用 USB 鼠标或者原车设备操作安卓, 选择 APP: Touch

2, start the Android box, operate Android with a USB mouse or the original car device, select APP: Touch



3, 校准触摸屏方法: 按照显示屏提示的顺序, 点击触摸屏十字光标中心位置, OK

3, calibration touch screen method: according to the order of the display prompt, click the touch screen cross cursor center position, OK

